

Lighten up!

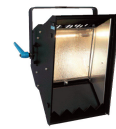
A NEW RANGE OF VINTAGE TV AND FILM LIGHTS AVAILABLE



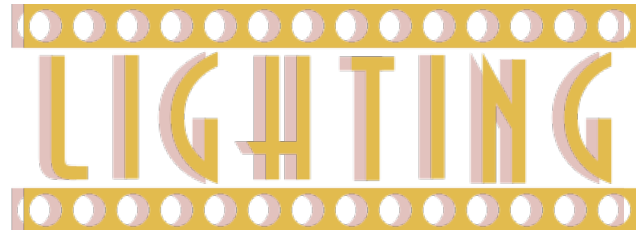
BIG CYCLO LIGHTS STATEMENT FIXTURES FOR LARGE SPACES



TV SPOTLIGHTS FRESNELL LENS WITH BARDOORS



SQUARE UNIT QUADRUPLE ASYMMETRIC CYCLORAMA



Add a touch of show business

Is your interior or venue lacking a certain *je-ne-sais-quoi*? Look no further!

Vintage Design Boutique has sourced a batch of extremely desirable old film- and tv lights. Use it as a novelty feature, ambient light or special décor accessory.

These lighting fixtures recall the glory days of analogue tv and filmmaking. Adapted for the 21st century, they now have energy saving LED light bulbs.

Spice up your interior with statement lighting fixtures

Dazzle visitors with unique vintage repurposed luminaires

The BIG vintage fixtures

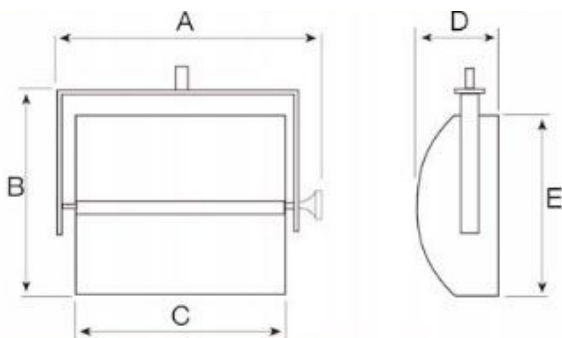
These BIG vintage fixtures come from a national broadcaster and have been active in their mayor studio's from the late 1980's onward. They have now been retired and are beginning their second life as mood lighting. A limited number of fixtures are available.

The RA 2502 and RAP 5001 were developed as TV studio lights. These large aperture luminaires are intended to create a very soft and powerful light, indirect lighting with a very diffuse field and without shadows. They are equipped with an aluminium symmetrical reflector which also dissipates the minimal heat the bulbs might generate. A second mirror simultaneously prevents and redirects or captures direct lamp light to the illuminated object, it is mounted on a turnable screened enclosure to ensure easy access to the bulbs. This eliminates glare or a hotspot effect without disturbing the even spread of light.

The fixtures can be mounted directly on the ceiling or need to be rigged with a clamp hook.

RA 2502

The RA 2502 has two 15 Watt LED bulbs and comes with or without barndoors.



Dimensions (mm)

A 580 - B 560 - C 465 - D 290 - E 480

Weight (kg) 6,7 kg

Options

- Powerplugs
- Pole operated
- Operating pole



All of above dimensions and weight are approximative depending on the desired options

Unique lighting fixtures for BIG interiors



RA 2502



RAP 5001



Arturo

2 x 15 W or 4 x 15 Watt

Warm White (3000K)

1200 lm per bulb

CRI >80

Dimmable LED

360° light

Energy efficiency A+

CE, RoHS certified

RAP 5001

The RAP 5001 is the RA 2502's big brother. It has four 15 Watt LED bulbs which can be switched on 2 by 2 or all four at the same time. All RAP 5001's are pole operated and come with barndoors.

Carts are available for easy storage and safe transport (2 units per cart).

Dimensions (mm)

A 1020 - B 1020 - C 885

D 370 - E 885

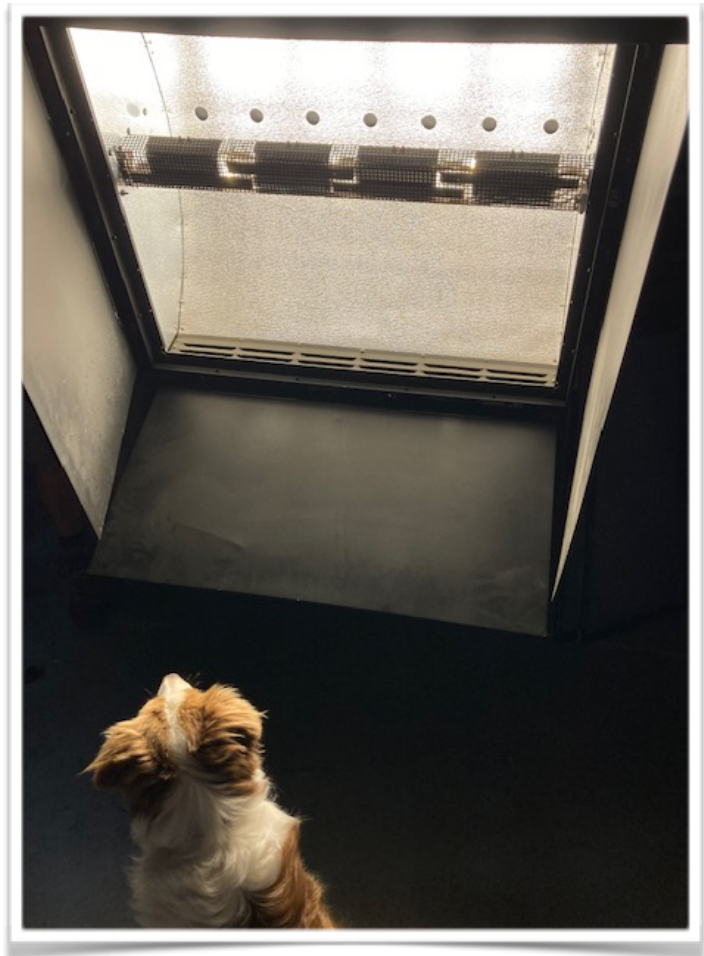
Weight (kg) 20,5 kg

Options

Powerplugs

Mounting solutions

Operating pole



Arturo

The Arturo fixture is very versatile, despite its imposing look. It can be suspended or placed on the floor due to the sturdy chassis.

The power switch is pole operated and lets you control the two dimmable 15 Watt LED bulbs individually or separately. Operating pole is available.

Dimensions (mm)

755 x 755 x 520

Weight (kg) 25 kg

Options

Different powerplugs

Pole operated

Operating pole

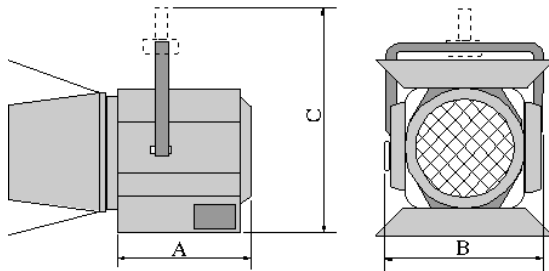


The 300 mm Fresnel

Fresnel lights can be found in studio's around the world and are now available for all to enjoy. Turn your space into a Hollywood film set and let your visitors feel glamorous by using these vintage tv and film lights. A limited number of fixtures are available.

The 5kW bulb has been replaced by a LED engine. It combines RGB or RGBAUV colour mixing, giving saturated colours with an outstanding white balance and smooth projection. Flicker free operation makes it suitable for tv shows, theatre and corporate events. A more simple option can be chosen in the form of a LED bulb for a more decorative effect.

All fixtures are pole operated and come with barndoors. Direct mounting on surface or rigging with hook clamps is possible. Operating pole is available.



Dimensions (mm)

A 395 - B 665 - C 445

Weight (kg) 24,8 kg

Options

Different powerplugs

Pole operated

LED choices

Operating pole

*Vintage lighting
for a touch of
glamour*



300mm Fresnel



Available light sources:

- single LED lamp
 - * Warm White 3200K
- LED engine cluster (12 x 6 in 1 LEDs)
 - * RGBAUV colour mixing
 - * DMX controlled (6,8 or 12ch)
 - * ca. 1340 lux @ 2mtr
- 7 x RGB LED (370 lm)
 - * RGB colour mixing
 - * DMX controlled (3,4 or 10ch)

Flicker free

CE, RoHS certified

Turn your space
into a
vintage
film set

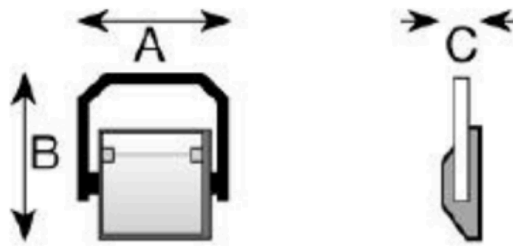


Compact Soft Lighting

These Soft lighting vintage fixtures have been sourced by Vintage Design Boutique from a national broadcaster and have been active in their mayor studio's from the late 1980's onward. They have now been retired and are beginning their second life as mood lighting. A limited number of fixtures are available.

ACP 1001

The ACP 1001 is a compact light which combines an asymmetrical reflector and two mirrors to make it an ideal soft light. The 15 Watt LED bulb generates a warm white for area and decorative illumination, diffused backlighting or overhead table lighting. The unit can be placed directly on the floor.



Dimensions (mm)

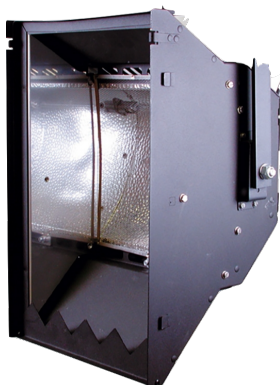
A 390 - B. 450 - C 230

Weight (kg) 5 k

Options

Different powerplugs

Hanging bracket and hook



Soft lighting with asymmetrical mirrors



ACP 1001



ACV 1004 C



Orion

1 x 15 W or 4 x 15 Watt

Warm White (3000K)

1200 lm per bulb

CRI >80

Dimmable LED

360° light

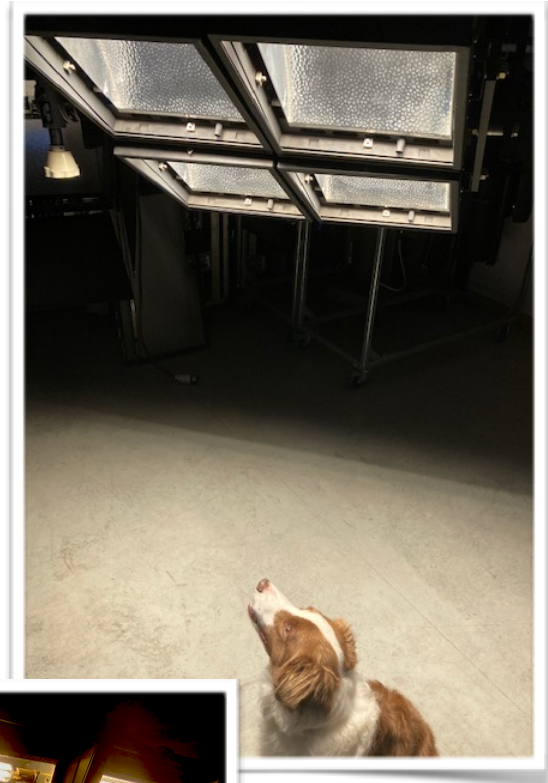
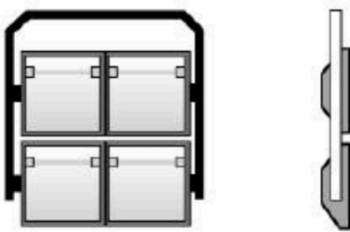
Energy efficiency A+

CE, RoHS certified

ACV 1004 C

The ACV 1004 C is a combination of four ACV 1001, compactly mounted together. Four dimmable 15 Watt LED bulbs generate a warm white for area and decorative illumination, diffused backlighting or overhead table lighting.

All bulbs can be dimmed individually, per pair or all four together. Contact us for options. The unit can be mounted directly or with a clamp hook.



Dimensions (mm)

A 730 - B 680 - C 120

Weight (kg) 15 kg

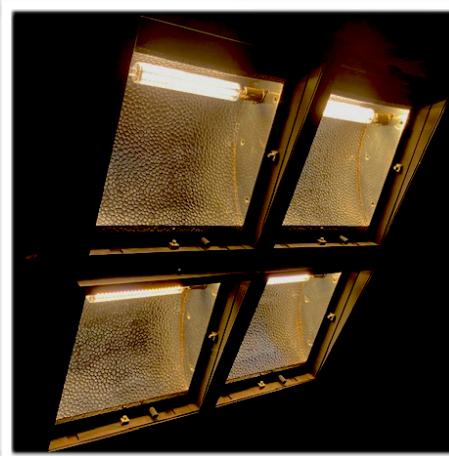
Options

Different Powerplugs

Clamp hook

Manual version or pole operated

Operating pole



Orion

The Orion softlights are available as single unit models and can be combined to cover larger surface areas. They are designed as a floor standing fixture. The reflector is an asymmetric multi-curve with a special anodised coating. The outer casing has a textured low gloss finish.

Dimensions (mm)

380 - 250 - 310

Weight (kg) 4 kg



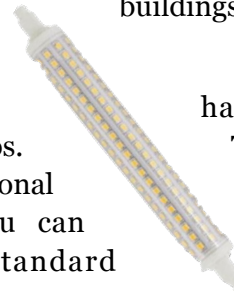
Care about the environment? So do we.

Old lighting fixtures are being scrapped because new regulations from the European Union have obliged the lighting industry to stop producing certain light bulbs because they are no longer efficient energy-wise.



Unfortunately this also means that a lot of solid, working lights will end up being made redundant on a very large scale in theatres, movie and tv sets for a lack of industry alternatives. But re-using old fixtures makes sense. By repurposing them -like the valorisation of old industrial sites and buildings- they can serve a second life.

The energy consuming bulbs with Label A+ energy LED bulbs. energy compared to conventional dimmable, which means you can warm white colours for standard



have been replaced They save up to 85% halogen. They are create intense fixtures.

The Fresnel Fixture is fitted with a DMX controlled LED engine to create every possible colour in the spectrum. Saving energy is a must to save on planet resources. Re-using old lighting fixtures also saves on raw materials, resources and reduces the carbon footprint.

Customised vintage lighting

All units on offer are unique and customised according to client demand.

They have been refurbished and fully checked for electrical safety.

Powerplugs can be fixed on request, choosing between PE, Type E or CEE 16A in different configurations. Some fixtures are available with mounting brackets and are pole operated.

Contact us for more information for your specific project and a tailor made quotation!

Not convinced yet? Make an appointment for a demo!

VINTAGE DESIGN BOUTIQUE

+32 16 90 40 66

sales@vintage-design.be

Oude Mechelsebaan 150

3200 Aarschot

Belgium

BE 0599.999.141

www.vintage-design.be (new updated website coming soon!)

In collaboration with our proud partners

